



Rubato Piano Drills

Introduction

Rubato Piano Drills (RPD) is your ultimate piano training companion. Through guided drills and real-time feedback, it helps you hone your skills, boost confidence, and master the keys one note at a time.

In Figure 1, the interface features a grand staff, keyboard, and intuitive controls, presenting musical elements in a format familiar to traditional piano songbooks. This visual alignment helps users build confidence as they transition to reading and performing from sheet music.

RPD offers four progressive play modes:

1. Notes
2. Scales
3. Full Chords
4. Arpeggiated Chords
5. Sheet Music

Modes 1 through 4 are presented as interactive drills, encouraging repetition and variation to reinforce muscle memory and musical fluency. Once users gain proficiency in these foundational exercises, they can advance to Mode 5, which introduces sheet music reading - simulating the experience of playing directly from a songbook.

RPD focuses primarily on a few core musical elements and does not support all types of notation or expressive markings. For consistency and ease of use, the app emphasizes the basic notation styles illustrated in Figure 2.

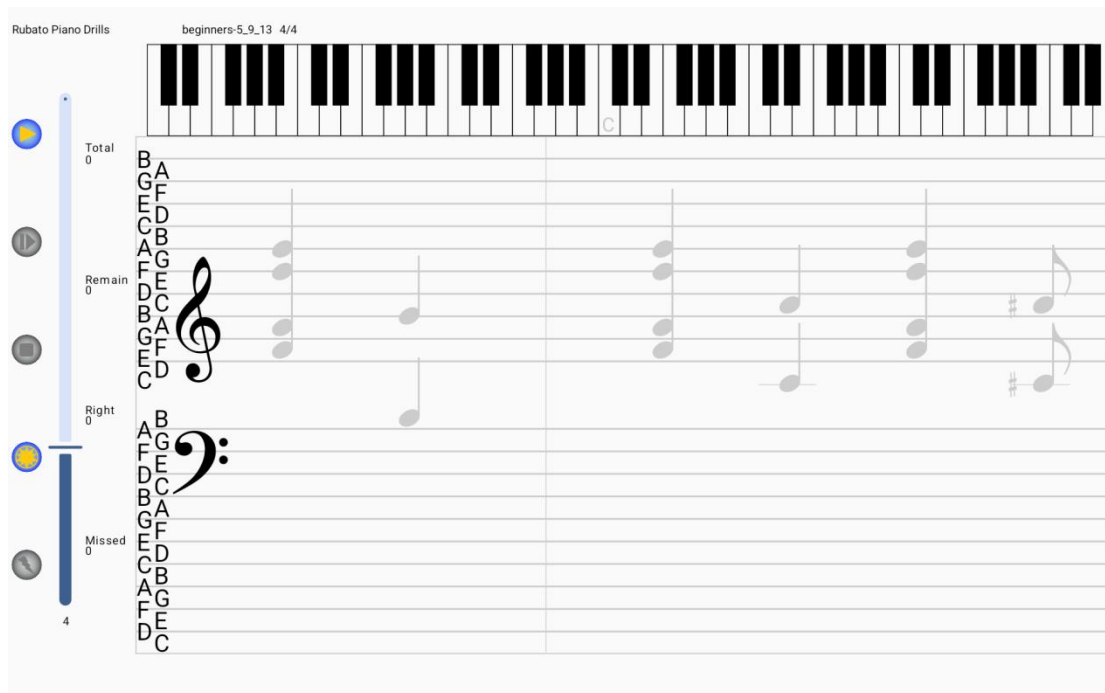


Figure 1: RPD Main Screen









Figure 2: Musical Notations

Table of Contents

Introduction	1
1. Controls	3
2. Keyboard	4
3. Vertical Letters	4
4. Grand Staff	4
5. MIDI Devices	5
6. Piano Mode	5
7. Scale Key	5
32. Tonality	6
33. Chord Categories	6
34. Staff Clefs	6
35. Note Type	6
36. Accidentals	6
37. Order Mode	7
38. Select Sheet Music File	7
39. Select Music File	7
40. Octaves	7
41. Loops	7
42. Inclusive Categories	7
43. Enable Music	7
44. Enable Sounds	7
45. Show Keyboard	8
46. Show Staff Letters	8
47. Bypass MIDI	8
48. Terms and Conditions	8
49. Privacy Policy	8
50. Quick Tutorial	8
51. Adapters	9

1. Controls

Six intuitive control buttons are positioned along the left side of the display, providing access to all core functions of the app. These controls streamline navigation and allow users to easily manage playback, settings, and other interactive functions.

-  Play button starts the note or chord sequence running.
-  Pause/Play button either pauses or continues the sequence.
-  Stop button stops the sequence.
-  Settings button enters the settings screen.
-  Next button moves to the next note or chord in the sequence.
-  Lower the slider to allow more time before advancing to the next note or chord.

2. Keyboard

The on-screen keyboard, located at the top of the display, serves as a visual guide to help users identify which keys correspond to the notes or chords being played. This feature reinforces learning by bridging the gap between notation and physical key placement. As users become more advanced and confident in their playing, the keyboard can be hidden to reduce visual dependency and encourage independent performance.

3. Vertical Letters

Vertical letter markers along the left side of the grand staff provide a helpful reference for identifying the pitch names of each staff line. This visual aid supports early learning by reinforcing note recognition and orientation. As users become more advanced and develop stronger reading skills, these markers can be hidden to promote independent notation reading.

4. Grand Staff

The grand staff window is horizontally scrollable when the app is not in play mode, allowing users to view extended note or chord sequences that exceed the visible display area. During playback, scrolling is disabled to maintain focus and ensure synchronization between the visual notation and the performed audio.

Settings

The Settings screen shown in Figure 3, allows users to customize various aspects of the app experience, tailoring playback, visual aids, and interaction preferences to their skill level and learning style. While most settings apply universally, some options are specific to individual piano modes.

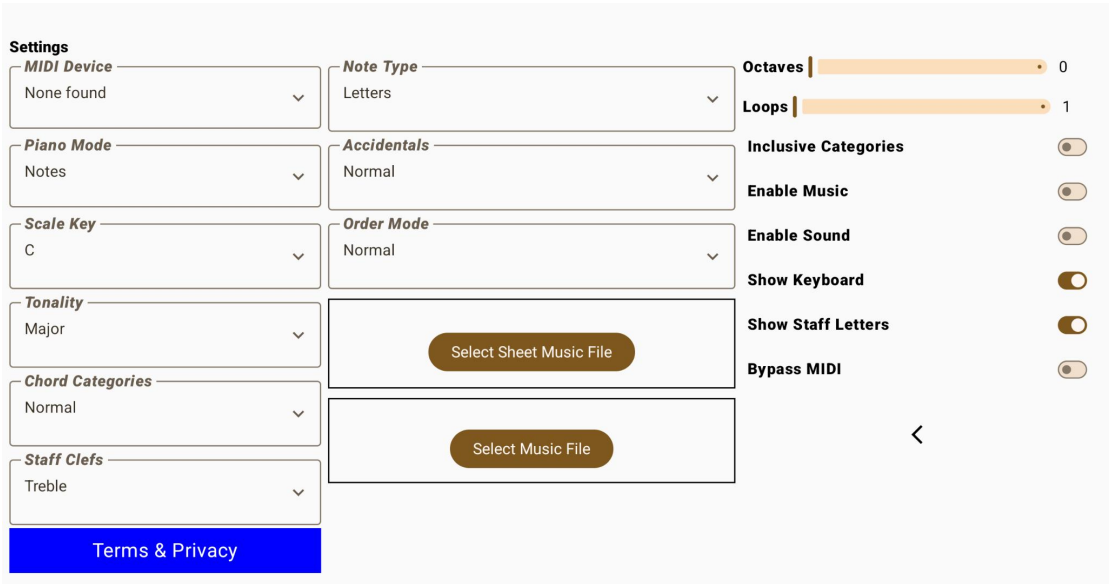


Figure 3: Settings

5. MIDI Devices

The MIDI Devices dropdown is a visual indicator that displays all currently connected MIDI devices. Changing the selection does not affect which device the app receives input from. If multiple MIDI devices are connected, the app will accept data from all of them simultaneously.

6. Piano Mode

1. Notes
2. Scales
3. Full Chords
4. Arpeggiated Chords
5. Sheet Music

The feature matrix shows which features are supported for each mode.

Feature matrix

Piano Mode	Loop	Staff Clefs	Note Type	Order Mode	Tonality	Chord Categories	Inclusive Categories	Scale Key	Accidentals	Octaves
Notes	✓	✓	✓	✓					✓	✓
Scales	✓	✓	✓	✓	✓			✓		
Full Chord	✓	✓	✓	✓	✓	✓	✓			
Arpeggiated Chord	✓	✓	✓	✓	✓	✓	✓			
Sheet Music	✓									

7. Scale Key

1. C
2. G
3. D
4. A
5. E
6. B
7. F#
8. C#
9. Ab
10. Eb
11. Bb
12. F
13. Cb
14. Gb
15. Db
16. Am
17. Em
18. Bm
19. F#m
20. C#m
21. G#m
22. D#m
23. Bbm

24. Fm
25. Cm
26. Gm
27. Dm
28. Abm
29. Ebm
30. A#m
31. All

32. Tonality

1. Major
2. Minor
3. Both

33. Chord Categories

1. Normal
2. 1st Inversion
3. 2nd Inversion
4. 6th
5. 7th
6. Major 7th
7. Aug
8. Aug7
9. 7-5
10. Dim
11. Dim7
12. 7b5

34. Staff Clefs

1. Treble
2. Bass
3. Both

35. Note Type

1. Letters
2. Symbols
3. Both

36. Accidentals

1. Normal
2. Sharps
3. Flats

4. Sharps & Flats
5. All

37. Order Mode

1. Normal
2. Reversed
3. Random

38. Select Sheet Music File

When Sheet Music is selected under Piano Mode, tap this button to select a JSON sheet music file.

39. Select Music File

Tap this button to select an accompanying music file to use as a background track.

40. Octaves

Selecting Notes under Piano Mode extends the keyboard range, adding two extra octaves above and below middle C to support a more full-range practice.

41. Loops

Up to 10 loops can be played in any mode under Piano Mode. Increasing the loop count does not generate new variations — it simply repeats the same sequence multiple times, allowing users to reinforce patterns through repetition.

42. Inclusive Categories

When this option is disabled, only the selected chord from the Chord Categories is played. When enabled, the app plays a sequence of all chords leading up to and including the selected chord.

43. Enable Music

Enable this option to play the selected music file as background audio.

44. Enable Sounds

Enable this option to play a brief tone when a note or chord is played correctly or missed.

45. Show Keyboard

Disable this option to hide the on-screen keyboard.

46. Show Staff Letters

Disable this option to hide the staff letter markings.

47. Bypass MIDI

When no MIDI devices are connected, enabling this option activates a demo-like play sequence for a preview.

48. Terms and Conditions

Tap this button to view the terms and conditions.

49. Privacy Policy

Tap this button to view the privacy policy.

50. Quick Tutorial

Follow these steps for a quick Notes tutorial.

1. Connect a MIDI keyboard to your tablet.
2. Launch the app.
3. Tap on Settings.
4. Select Notes under Piano Mode.
5. Select Treble under Staff Clefs.
6. Select Symbols under Note Type.
7. Select Normal under Accidentals.
8. Select Norl under Order Mode.
9. Tap on the Back arrow to return to the main screen.
10. Set the Slider to 4
11. Tap on the Play button.

You will hear four ticks to allow you to prepare your hand position.

Play the green highlighted note on the display until all notes are played.

You will see the total number of notes to be played. The number of notes remaining, the number of notes correct, and the number of notes missed will be updated as you play the notes.

A light gray note means it's not played yet. A black note means it's the current note to be played. A green note means the note was played correctly. A red note means the note was missed.

Once the drill is completed, you can change the settings in steps 5-8 to get a different note configuration. You can increase the number of octaves to get a wider

range of notes on the keyboard, and you can also increase the number of loops to play the same drill over-and-over again without tapping the Play button.

For a quick chords tutorial, perform the same steps 4-11 and change the Piano Mode in step 4 to Chords.

51. Adapters

The following adapters may be required to connect a MIDI keyboard to your Android device. The USB hub can be used to connect multiple MIDI keyboards to your Android device. All adapters can be found on Amazon.

